



16.12.2024

# TECHNICAL INTERRUPTION TO ELECLINK OPERATIONS

Extension update on the  
expected return to service

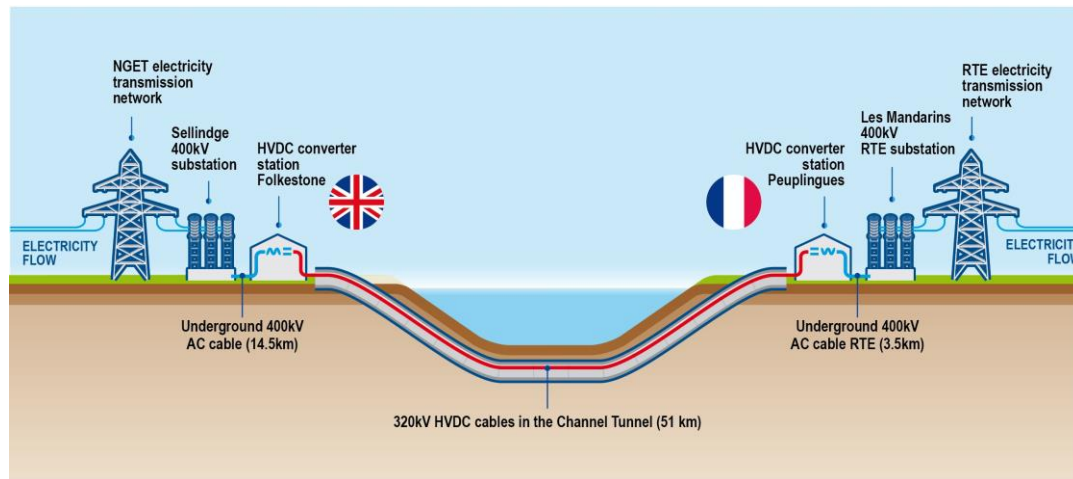




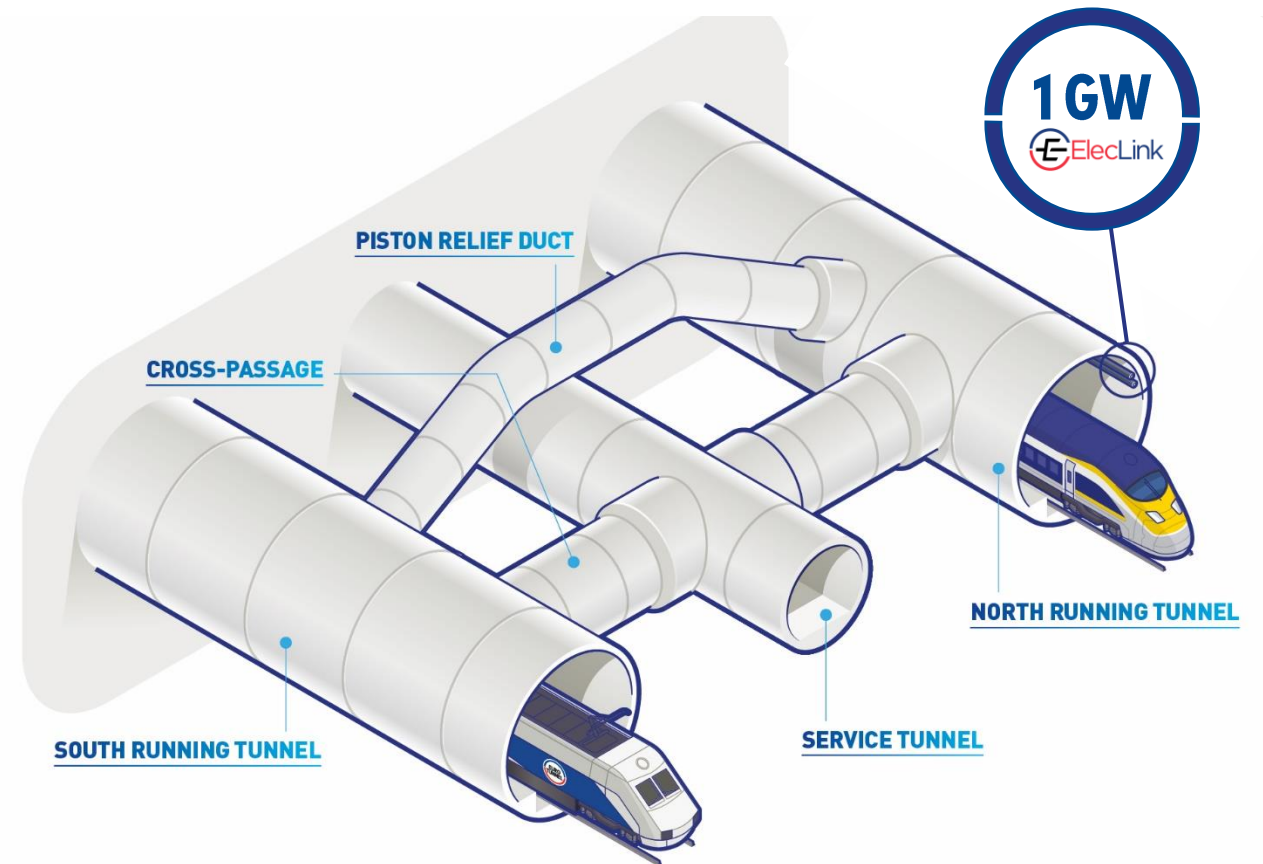
## DISCLAIMER

*All forward-looking statements in this presentation are Getlink SE management's present expectations of future events and are subject to a number of factors and uncertainties that could cause actual results to differ materially from those described in the forward-looking statements. For a detailed description of these factors and uncertainties, please refer to the section "Risk Factors" in our Universal Registration Document and documents filed by the Group with the French securities regulator (AMF) (available on the Group's website <https://www.getlinkgroup.com>). Getlink SE undertakes no obligation to publicly update or revise any of these forward-looking statements.*

## An electrical interconnector connecting bi-national networks

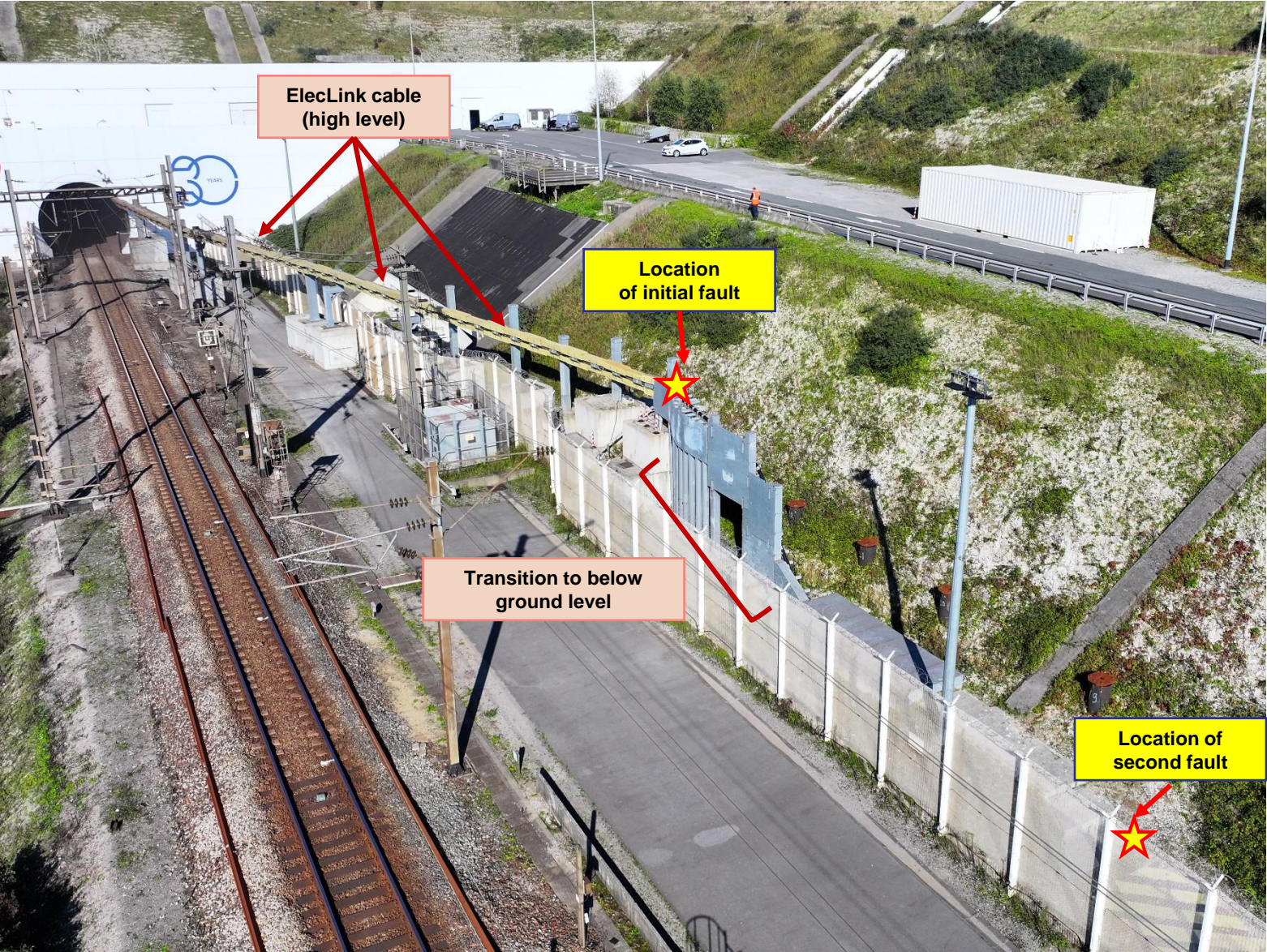


## A unique cable structure located in the north-running railway tunnel



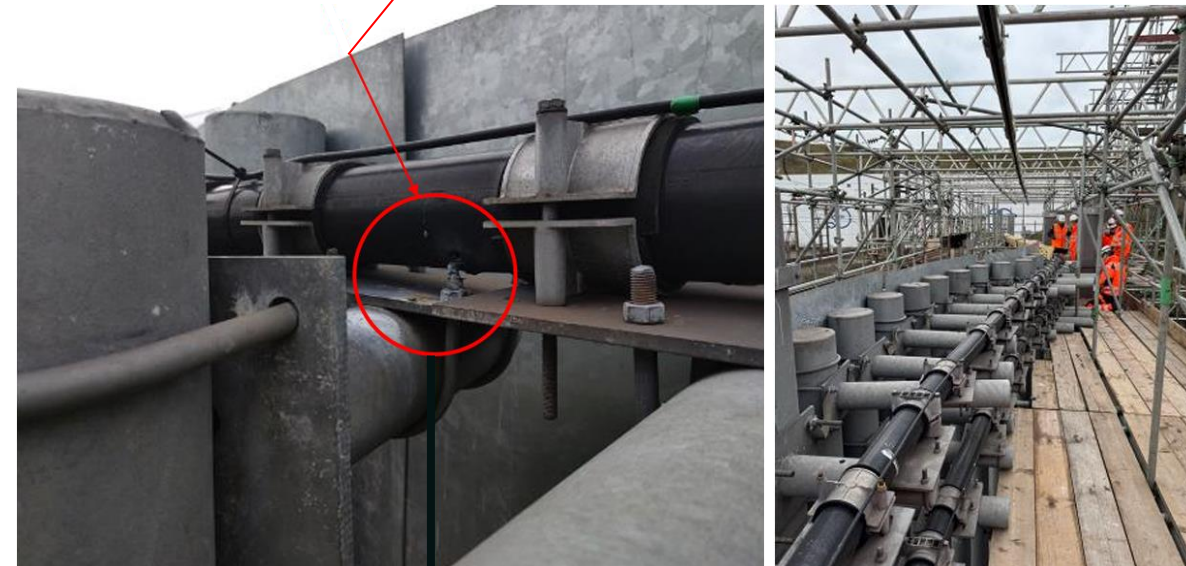
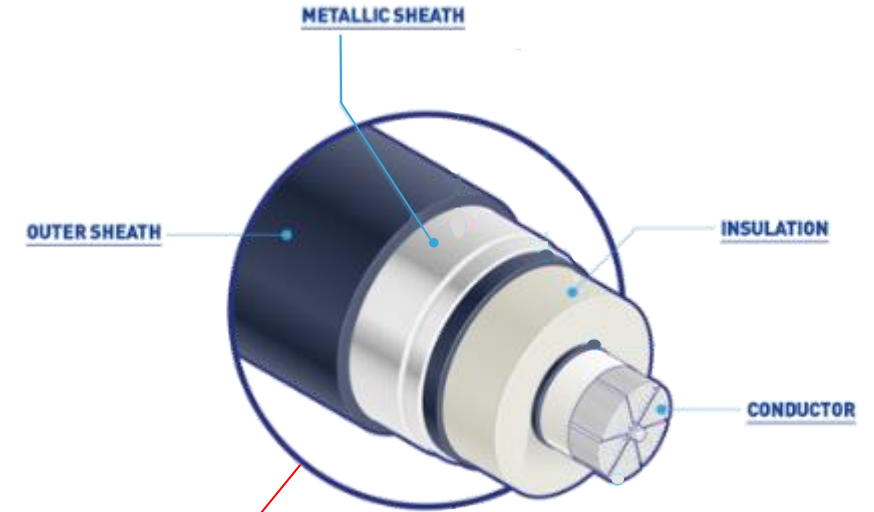
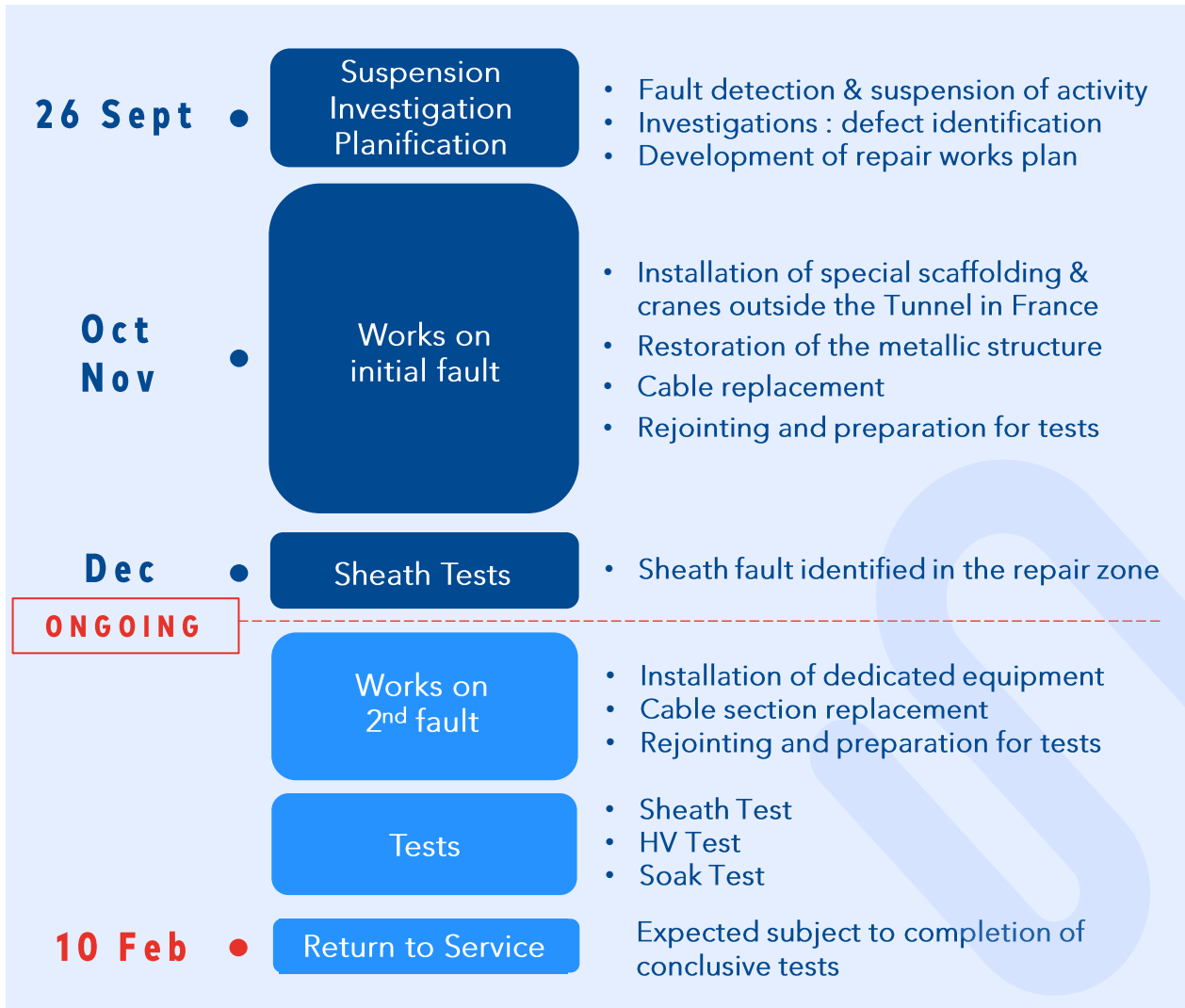


# ELECLINK: IDENTIFICATION & WORKS ON THE FAULT





# ELECLINK: UPDATES ON EXPECTED RETURN TO SERVICE 10 FEBRUARY



# ELECLINK: FINANCIAL IMPACTS MAINLY ON NON-DELIVERED CONTRACTED REVENUES TO OUR CUSTOMERS

## Estimated 2024 commercial impact<sup>1\*</sup>

Non-delivered contracted revenues ~€66m

Short-term capacity auctions loss and ancillary ~€5m

Costs and penalty ~€12m  
*(in particular related to capacity markets )*

Estimated 2025 commercial impact<sup>2\*</sup> ~€30m

Continued ongoing discussions on insurance coverage

**Group 2024 EBITDA  
target range  
€780-€830 million\*\*  
confirmed**

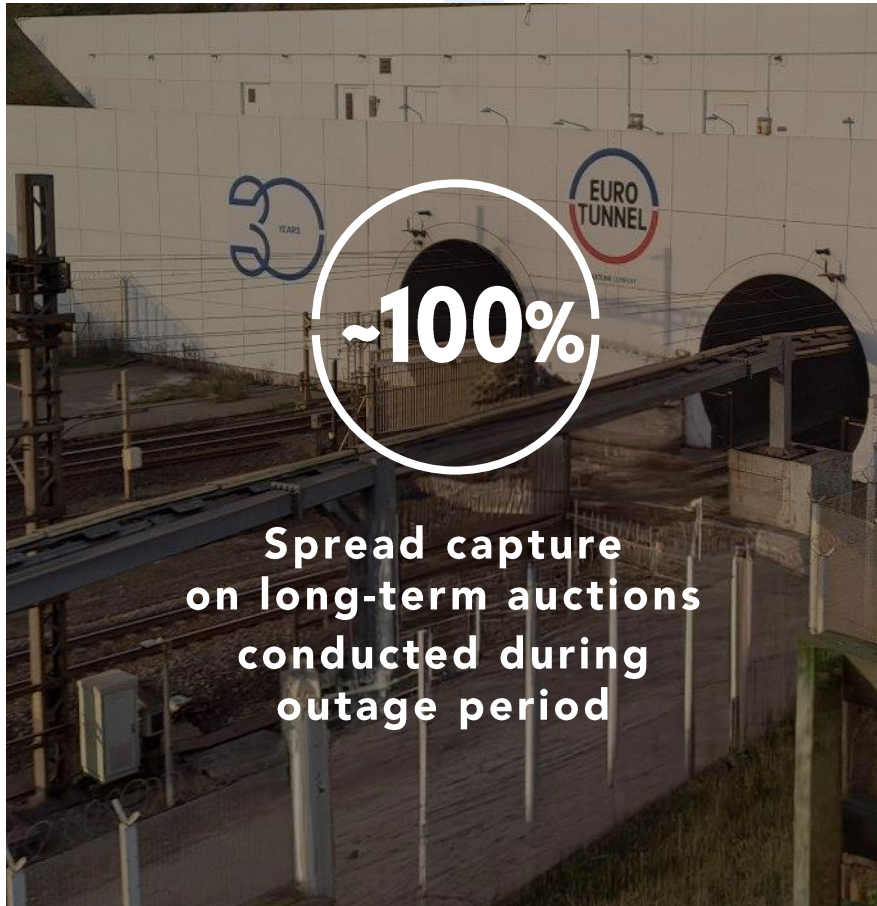
<sup>1</sup> Estimated commercial impact for the period : 25 September 2024 - 31 December 2024.

<sup>2</sup> Estimated commercial impact for the period : 1 January 2025 - 9 February 2025.

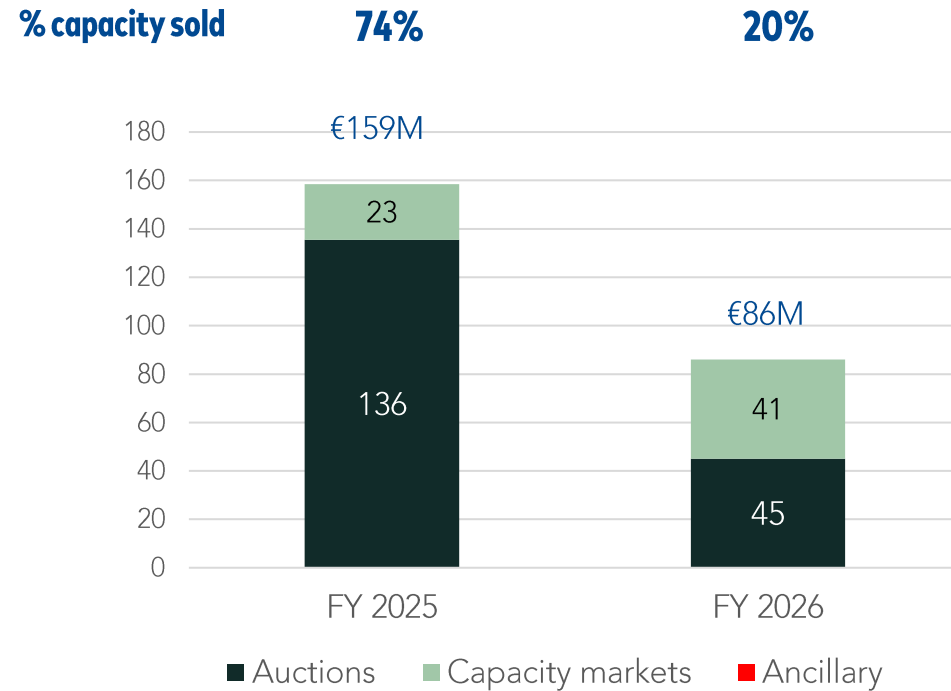
\* These elements do not take into account the profit-sharing mechanism provision.

\*\* Note : At the exchange rate of £1=€1.15 - After ElecLink provision for profit-sharing consistent with 2023 methodology

# ELECLINK: SUSTAINED CUSTOMER CONFIDENCE DURING OUTAGE PERIOD



## GOOD VISIBILITY OF FUTURE REVENUE\* GENERATION



*\*At 13 December 2024, subject to the actual delivery of service with a Return to Service on 10 February 2025. Capacity markets revenue net of potential penalties linked to current outage.*





# Q&A







# CONTACT



**Virginie Rousseau**  
**Capital Markets Director**

✉ [virginie.rousseau@getlinkgroup.com](mailto:virginie.rousseau@getlinkgroup.com)

☎ +33 6 77 41 03 39